

# Newry SureStart

# Daisymail

JANUARY - MARCH 2025



## Happy New Year from all @ Newry Sure Start

**As we step into the new year, winter is in full swing, bringing with it chilly weather and the perfect opportunity for some fun seasonal activities.**

Whether it's building snowmen, going on frosty nature walks, or enjoying cozy indoor crafts, there's plenty to keep everyone entertained.

Our Parent, Carer and Toddler groups are proving very popular and attendance is increasing weekly - we will continue to provide early learning and play opportunities and themed play sessions so make sure to join us for St Valentine Day, St Patricks and Mother's Day sessions.

Moving into February we have a number of Parenting Programmes, Parenting Puzzle a programme aimed at supporting parents through the toddler stages, Aware Mood

Matters health workshop and our bi weekly Young parents group continues.

As we look forward to spring we are excited to invite children eligible for the Development Programme for 2-3 Year Olds Open Day on Friday 21st March, children and their parents will have an opportunity to visit and enjoy a play session, meet the team and collect an expression of interest form.

All the team in Newry Sure Start are looking forward to meeting you over the coming months.

If you have any comments or suggestions, please do get in touch at [info@newrysurestart.org](mailto:info@newrysurestart.org)

**Anne Rice,**  
Project Manager and the Newry SureStart Team

### Educational Authority Admission Key Dates 2025

Date	Activity
Thursday 5 December 2024	Admissions criteria for Pre-schools published on the EA website.
Friday 10 January 2025 - at 12 noon	EA Connect opens for online applications for pre-school, submitting verification/ supporting documents.
Friday 24 January 2025 - at 12 noon	EA Connect closes for online punctual applications for pre-school.
Wednesday 29 January 2025 - by 4pm	Deadline for submitting verification/supporting documents via EA Connect. Final date for late applications.

Whether your child is starting pre-school, primary or post-primary, the Education Authority digital tool will help you find out what you need to know about getting a place at school. If your child is starting pre-school or primary school in September 2025, you can apply for their place online, further information on the admission procedure will be available on their website <https://www.eani.org.uk/parents/admissions>.



### Exciting Updates from our Administration team

#### Newry Sure Start Web Site Revamp



We are currently working on updating our website, in the coming months we hope to add some new features for you to access our services, book programmes and find valuable resources to support you and your family.

#### Online Booking Form

We are developing a new online booking form, allowing you to conveniently sign up for our various programmes and services from the comfort of your home. Whether you're interested in our antenatal and postnatal services or parenting workshops, booking your spot has never been simpler. Just fill out an expression of interest form and one of our team will get back to you to confirm your place. You can also download a copy of our newsletter. Remember, many of our programmes are drop in!

#### Updated Useful Links Section

Our useful links section has been refreshed with the latest, most relevant and up to date information and resources. Here, you can find information on local services, health advice, information on registered childminders, benefit and housing advice, and much more. At Newry Sure Start, we are committed to supporting you every step of the way on your parenting journey, if there is something you would like to see on our web site or have any suggestions or feedback on how we can improve our social media channels, please do let us know by emailing [info@newrysurestart.org](mailto:info@newrysurestart.org)

Best wishes, Colleen

#### Supported By



028 3083 3780  
[info@newrysurestart.org](mailto:info@newrysurestart.org)  
[www.newrysurestart.org](http://www.newrysurestart.org)



@NewrySureStart



Newry SureStart, Unit 1, Five-Ways Shopping Complex,  
99 Armagh Road, Newry, Co Down, BT35 6PW.

## January Speech & Language Message of the Month...

**“Kind words and gentle touch...”**

**Help me explore and learn so much”**

How we speak to our little ones makes a big difference. Even in the womb, babies respond to their mother’s voice and touch so you might notice that when you talk to or touch your bump, your baby moves in response.

It’s important to give your baby lots of cuddles and as they say you can’t spoil a baby so never worry about cuddling your baby too much!

Nursery rhymes like ‘This little piggy’ or ‘Round and round the garden’ are lovely ways to engage with your baby and toddler through gentle touch and tickles.

Baby massage is another lovely way to bond and communicate so keep an eye out for any classes coming up here in Sure Start!



## February Speech & Language Message of the Month...

**“Words by one make talking fun...”**

**Copy my actions, sounds and words”**

Hearing your little one say their first words is an exciting milestone that usually happens around their first birthday but there are lots of steps along the way as your baby’s communication skills develop rapidly in the first year.

Babies are interested in people from birth, and they will enjoy imitating what they see around them.

Copying your child’s actions and sounds helps your child know you are interested and paying attention. This helps them learn to interact and copy you too!

Please scan the link below for further information from BBC Tiny Happy People.



This website provides a good guide of what to expect in terms of a child’s speech and language development by age and some tips of how parents can support their child’s communication skills. Parents can also fill in the questions on the progress checker to see if their child is on track or may benefit from some extra support.

These short videos (around 1 minute) show some lovely ways parents can use copying sounds, words and actions to enjoy positive interactions and encourage back and forth turn taking with their babies and toddlers:



Ages and Stages



Child’ Progress Checker

## March Speech & Language Message of the Month...

**“Books are fun for everyone!**

**You can turn a page at any age”**

**Sharing a book with your child is great for:**

- Encouraging listening and language
- Sparking your child’s imagination, stimulating curiosity and helping their brain development with the love of books

Share a book anytime, anywhere and at any age. Babies are never too young to share a book. Why not start with a ‘bath, book and bed’ routine? Turn off any background noise, e.g. TV and tidy away any distractions.

Follow your child’s lead and look at and talk about the pictures or read the story- you don’t have to do this word for word. Bring the story to life with different expressions and voices.

For children who aren’t talking yet or are only starting to say a few words, instead of asking ‘what’s that?’ label the picture for them e.g. ‘look ... a ball’ and repeat the word ‘ball’ - your child needs to hear the word lots of times to understand it before they will ever start using it! Keep labeling the pictures for them until they are ready to join in.

For children who are talking, keep your language simple and build on what they say by adding another word e.g. if your child says ‘fish, you say ‘yes, big fish’ or ‘fish swimming’ - this will help to develop their speech and language skills.

Books with rhyme and repetition are great for encouraging your child to join in.

# Developmental Programme for 2-3 Year Olds

Open Day Friday 21st March 2025

The Developmental Programme for 2-3 Year Olds is to 'focus on constructive play in group settings to enhance children's social and emotional developmental, build on their communication skills and encourage imagination through play.

If you have a child born on or between the 02/07/2022 and 01/07/2023 and are registered with Newry Sure Start, you may be eligible to express an interest in The Developmental Programme for 2-3 Year Olds 2025-2026.

Expression of interest forms can be collected at our open day on Friday 21st March from our room at Altnaveigh House Belfast Road, 9.30am -12.30pm.

## Partnership Working With Parents

### Home Visits

**What are Home Visits?**

- Builds confidence
- Special time for the child
- Knowledge of home life/cultures
- Parents and children feel more relaxed
- 1:1 Time for discussion and information sharing
- Forming relationships and building trust with parents and children

*It (Play & Stay) gave myself and my Husband great ideas of what we could do at home, with very little cost and trouble - Parent Comment -*

### Play & Stay

**What is Play & Stay?**

*Play and Stay is an opportunity to take part in a wealth of activities that encourages your child's learning and development.*

**Some Benefits include...**

- Building confidence
- 1:1 time for parent and child
- Interaction with practitioners and other parents
- New learning experiences through play, using natural materials and cost effective resources
- Providing parents with ideas that they carry out in their home environment
- Parents have the opportunity to take part in their child's learning

*(Play & Stay) Gives you one to one time to play with your child, which may not be possible at home -Parent Comment-*

*(Play & Stay) Exposed children to a range of ideas and provided me with some interesting tasks to do at home -Parent Comment-*



For further information please visit our FAQ on our website [www.newrysurestart.org](http://www.newrysurestart.org)

## Tiny Beats

### Sing, Learn, and Grow Together!

Singing nursery rhymes and songs with young children is a wonderful way to support their speech, language, and communication skills from an early age. The Tiny Beats program at Newry SureStart offers a fun and welcoming space where children delight in singing and listening to songs and rhymes.

While children enjoy this playful experience, parents and carers also benefit by learning traditional and modern nursery rhymes, guided by our experienced Early Learning and Play team. The program encourages families to keep the learning going at home—whether it's singing in the car, during bath time, or at bedtime.

Beyond music, Tiny Beats fosters essential social skills like turn-taking, sharing, listening, and cooperating, while also incorporating movement, counting, and more. Join us to create joyful, lasting memories while nurturing your child's development



## Celebrating Diversity

### A Warm Welcome to Our Ethnic Minority Groups

At Sure Start, we believe that diversity is our strength. Our local community is enriched by the vibrant cultures, traditions, and perspectives that each ethnic minority group brings. At all our programmes and events we are committed to creating an inclusive environment where everyone feels valued and supported.

We understand that moving to a new country can be challenging. Our Roman and Ethnic Minority Parent, Carer and Toddler groups are designed to provide support, resources, and a sense of belonging, we hope it will give you and your children an opportunity to meet and make new friends in a friendly relaxed and welcoming atmosphere. This programme is delivered in Partnership with Early Years Toybox Project.

We invite all members of our ethnic minority groups to join us at Sure Start. Your unique experiences and contributions are what make our community special. Together, we can build a brighter future for everyone.

Let's celebrate our differences and work together to create a welcoming and inclusive community for all.

Warm regards,  
Karen



# January 2025: Key Dates for Your Diary



MONDAY

## Activity

### Parent, Carer & Toddler Group

Our weekly drop-in early learning and play group for parents, carers and children up to their 4th birthday

## Day & Date

Every Monday

## Time

10.30am - 11.45am

## Venue

Altnaveigh House, Belfast Road

## Booking

karens@newrysurestart.org  
(Drop In)

### Infant Massage

Infant massage offers a range of benefits for both babies and parents. For babies, it can help improve sleep quality, reduce stress, and promote healthy physical and emotional development

Monday - starting 13th January

10.30am - 11.30am

Derrybeg Community Centre

thelmad@newrysurestart.org  
(Booking only)

### Time for Me

4 week Parents only Programmes  
Limited Creche Available

Recreational programme to provide parents with an opportunity to take some time out for themselves to help reduce stress and improve mental well-being

Monday - 13th, 20th 27th and 3rd February 2025

10.00am - 12.00pm

Fiveways

charmainem@newrysurestart.org  
(Booking only)

TUESDAY

### Tiny Beats

Our weekly drop in musical rhyme and dance group suitable for all ages 4 and under

Every Tuesday - Starting 7th January

9.30am - 10.30am

Derrybeg Community Centre

karens@newrysurestart.org  
(Drop In)

### Solihull Parenting Approach

10 week parenting programme. Limited Creche Available. Learn how to support your child's emotional well-being and healthy brain development

Tuesday - Starting 14th January

10.00am - 12.00pm

Fiveways

rebekahm@newrysurestart.org  
(Booking only)

### Bumps and Babies Club

"Our weekly drop-in support group for parents and carers with babies from birth to 12 months of age."

Every Tuesday

11.00am - 12.00pm

Derrybeg Community Centre

(Drop In)

WEDNESDAY

### Parent, Carer and Toddler Group

Our weekly drop-in early learning and play group for parents, carers and children up to their 4th birthday.

Every Wednesday

10.30am - 11.45am

Derrybeg Community Centre

karens@newrysurestart.org  
(Drop In)

### Breastfeeding Support Group & Coffee Morning

Our weekly drop-in support group, all breastfeeding mums, babies and antenatal women welcome. Delivered in partnership with the Health Visiting Team in the SH&SCT.

Every Wednesday

10.30am - 12.00pm

Newry Leisure Centre (Training Room)

sandrah@newrysurestart.org  
(Drop In)

### Young Parents Group

Bi weekly drop-in support group for young parents and carers with babies from birth to 2 years of age. Delivered in Partnership with the Family Nurse Partnership.

Wednesday Every two weeks 12th & 26th March

12:30pm - 2:00pm

Derrybeg Community Centre

karens@newrysurestart.org  
(Drop In)

### Toddle and Talk 4 week Programme

Four-week programme to enhance speech language & communication development through play by having an opportunity to experience:

- Interaction with peers
- Activities to further develop attention and listening skills
- Turn taking and waiting
- Developing children's speech language and communication skills through use of signs, gestures, and extending their vocabulary by following your child's lead.

Wednesday 22nd & 29th January & 5th & 12th February

10:00am - 11:00am

Fiveways

adelet@newrysurestart.org  
(Booking only)

THURSDAY

### Parent, Carer & Toddler Group

Our weekly drop-in early learning and play group for parents, carers and children up to their 4th Birthday.

Every Thursday

10.30am - 11.45am

St Peters Parish Centre Warrenpoint

karens@newrysurestart.org  
(Drop In)

### Ethnic Minorities and Roma Group

Our weekly drop-in support group for members of the Roma community and Ethnic Minorities. Delivered in Partnership with the Early Years Toybox Project.

Every Thursday

10.30am - 11.45am

Altnaveigh House, Belfast Road

karens@newrysurestart.org  
(Drop In)

### All about us Parent & Child Group

Our weekly drop-in support group for families with a young child who require additional support

Every Thursday

10.00am - 11.30am

Derrybeg Community Centre

charmainem@newrysurestart.org  
(Drop In)



# February 2025: Key Dates for Your Diary



MONDAY

Activity	Day & Date	Time	Venue	Booking
<b>Parent, Carer &amp; Toddler Group</b> Our weekly drop-in early learning and play group for parents, carers and children up to their 4th birthday	Every Monday	10.30am - 11:45am	Altnaveigh House, Belfast Road	karens@newrysurestart.org <b>(Drop In)</b>
<b>Parenting Puzzle</b> 4 Week Parenting programme Programme aimed at supporting parents through the toddler stage, offering tips to deal with the unwanted behaviours while recognising the importance of praise and rewards <b>Limited Creche Available</b>	Mondays  10th & 17th February and 3rd & 10th March	10.00am - 12.00pm	Fiveways	rebekahm@newrysurestart.org <b>(Booking only)</b>

TUESDAY

<b>Tiny Beats</b> Our weekly drop in musical rhyme and dance group suitable for all ages 4 and under	Every Tuesday	09:30am - 10:30am	Derrybeg Community Centre	karens@newrysurestart.org <b>(Drop In)</b>
<b>Bumps and Babies Club</b> "Our weekly drop-in support group for parents and carers with babies from birth to 12 months of age."	Every Tuesday	11:00am - 12:00pm	Derrybeg Community Centre	<b>(Drop In)</b>
<b>Aware Mood Matters Health Workshop</b> Health Workshop for antenatal parents and parents of children 0-3 years <b>Limited Creche Available</b>	Tuesday 24th February	10.00am - 12.00pm	Fiveways	karenmcgrath@newrysurestart.org <b>(Booking only)</b>

WEDNESDAY

<b>Parent, Carer and Toddler Group</b> Our weekly drop-in early learning and play group for parents, carers and children up to their 4th birthday	Every Wednesday	10.30am - 11:45am	Derrybeg Community Centre	karens@newrysurestart.org <b>(Drop In)</b>
<b>Breastfeeding Support Group &amp; Coffee Morning</b> Our weekly drop-in support group, all breastfeeding mums, babies and antenatal women welcome. Delivered in partnership with the Health Visiting Team in the SH&SCT	Every Wednesday	10.30am - 12.00pm	Newry Leisure Centre (Training Room)	sandrah@newrysurestart.org <b>(Drop In)</b>
<b>Young Parents Group</b> Bi weekly drop-in support group for young parents and carers with babies from birth to 2 years of age. Delivered in Partnership with the Family Nurse Partnership	Wednesday  12th & 26th February	12:30pm - 2:00pm	Derrybeg Community Centre	karens@newrysurestart.org <b>(Drop In)</b>

THURSDAY

<b>Parent, Carer &amp; Toddler Group</b> Our weekly drop-in early learning and play group for parents, carers and children up to their 4th birthday	Every Thursday	10:30am - 11:45am	St Peters Parish Centre Warrenpoint	karens@newrysurestart.org <b>(Drop In)</b>
<b>Ethnic Minorities and Roma Group</b> Our weekly drop-in support group for members of the Roma community and Ethnic Minorities. Delivered in Partnership with the Early Years Toybox Project	Every Thursday	10.30am - 11:45am	Altnaveigh House, Belfast Road	karens@newrysurestart.org <b>(Drop In)</b>
<b>All about us Parent &amp; Child Group</b> Our weekly drop-in support group for families with a young child who require additional support	Every Thursday	10:00am - 11:30am	Derrybeg Community Centre	charmmainem@newrysurestart.org <b>(Drop In)</b>

## We value your feedback!

As we are still settling into our new venues, we would love to hear your thoughts. Are the new locations easier to access? Do you find them comfortable and inviting? Are there other venues you think we should consider using?

Your input is invaluable to us, so please take a moment to share your experience and suggestions – all feedback will remain strictly confidential.

We look forward to hearing your views - email [info@newrysurestart.org](mailto:info@newrysurestart.org).



# March 2025: Key Dates for Your Diary



MONDAY

## Activity

**Parent, Carer & Toddler Group**  
Our weekly drop-in early learning and play group for parents, carers and children up to their 4th birthday

## Day & Date

Every Monday

## Time

10.30am - 11.45am

## Venue

Altnaveigh House, Belfast Road

## Booking

karens@newrysurestart.org  
**(Drop In)**

**Tooth Fairy Event**  
Drop in and learn all about the importance of good dental health for children under 4. There will be storytelling sessions, fun activities, and a chance to meet your local dentist

Monday 24th March

10.30am - 12.30pm

Altnaveigh House, Belfast Road

karens@newrysurestart.org  
**(Drop In)**

TUESDAY

**Tiny Beats**  
Our weekly drop in musical rhyme and dance group suitable for all ages 4 and under

Every Tuesday

09:30am - 10:30am

Derrybeg Community Centre

karens@newrysurestart.org  
**(Drop In)**

**Bumps and Babies Club**  
"Our weekly drop-in support group for parents and carers with babies from birth to 12 months of age."

Every Tuesday

11:00am - 12:00pm

Derrybeg Community Centre

**(Drop In)**

WEDNESDAY

**Parent, Carer and Toddler Group**  
Our weekly drop-in early learning and play group for parents, carers and children up to their 4th birthday

Every Wednesday

10.30am - 11.45am

Derrybeg Community Centre

karens@newrysurestart.org  
**(Drop In)**

**Breastfeeding Support Group & Coffee Morning**  
Our weekly drop-in support group, all breastfeeding mums, babies and antenatal women welcome. Delivered in partnership with the Health Visiting Team in the SH&SCT

Every Wednesday

10.30am - 12.30pm

Newry Leisure Centre (Training Room)

sandrah@newrysurestart.org  
**(Drop In)**

**Young Parents Group**  
Bi weekly drop-in support group for young parents and carers with babies from birth to 2 years of age. Delivered in Partnership with the Family Nurse Partnership

Wednesday  
Every two weeks  
12th & 26th March

12:30pm - 2:00pm

Derrybeg Community Centre

karens@newrysurestart.org  
**(Drop In)**

THURSDAY

**Parent, Carer & Toddler Group**  
Our weekly drop-in early learning and play group for parents, carers and children up to their 4th Birthday

Every Thursday

10:30am - 11:45am

St Peters Parish Centre Warrenpoint

karens@newrysurestart.org  
**(Drop In)**

**Ethnic Minorities and Roma Group**  
Our weekly drop-in support group for members of the Roma community and Ethnic Minorities. Delivered in Partnership with the Early Years Toybox Project

Every Thursday

10:30am - 11:45am

Altnaveigh House Belfast Road

karens@newrysurestart.org  
**(Drop In)**

**All about us Parent & Child Group**  
Our weekly drop-in support group for families with a young child who require additional support

Every Thursday

10:00am - 11:30am

Derrybeg Community Centre

charmainem@newrysurestart.org  
**(Drop In)**

FRIDAY

**Developmental Programme for 2-3 Year Olds Open Day**  
Open day for children eligible to apply for Development Programme for 2-3 Year Olds Meet the team and collect expression of interest form.

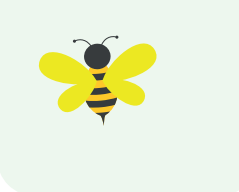
Friday 21st March

10.00am - 1.00pm

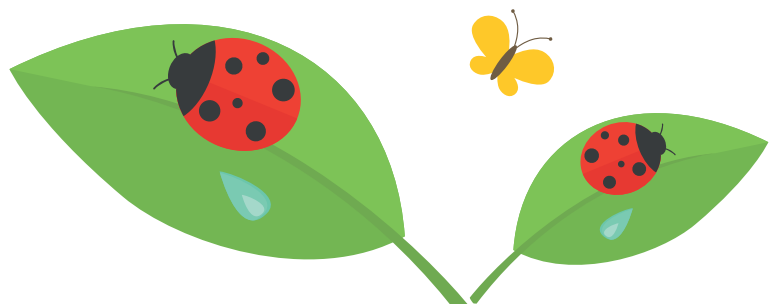
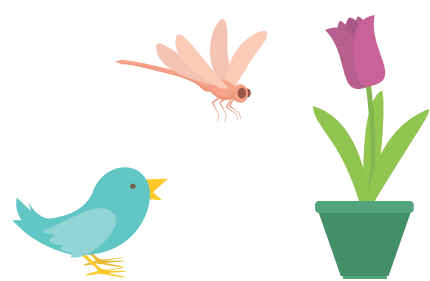
St Malachy's Primary School

Children must be eligible to register with Newry Sure Start and born between July 2nd 2022 and July 1st 2023

All welcome



For further information email: catherinemcc@newrysurestart.org  
**(Drop In)**



## Meet Sharon Crummy!



Hi, I'm Sharon Crummy, and I've had the pleasure of being part of the SureStart team since 2002. Throughout these years, I've dedicated myself to supporting children's growth and development across all areas, and it's been a fulfilling journey.

One of my proudest achievements was being part of the team that launched the Rainbow Den. I had the privilege of working there for 17 years, helping to create a space where every child could thrive and feel supported. After those wonderful years, I moved into the Play Development Team, where I continue to enjoy my role, especially working closely with parents and children in our lively Parent and Toddler groups. It's a rewarding experience to provide families with spaces for play, bonding, and interaction, and I am grateful to be part of these moments.

On the personal side, I'm a proud mother to four children and grandmother to two beautiful grandchildren. In my free time, I love walking, spending time with family and friends, and taking a few days away now and then to relax, swim, and recharge.

Thank you for letting me share my journey with you - I'm excited to continue bringing joy and support to the families in our community!

## Meet Thelma Donnan!



Hello! My name is Thelma Donnan, and I am a Play Development Worker at Newry SureStart. I have been a proud member of the Newry SS team since 2000, dedicating over two decades to supporting children and families in our community.

### What I Do

In my role, I deliver a wide range of play and early learning experiences tailored to the needs of the children and families registered with Newry SureStart. This includes:

**Group Activities:** I organise and facilitate various group sessions where children can engage in fun, educational, and interactive play. These activities help develop their social, emotional, language, cognitive, and physical skills in a safe and nurturing environment.

**Play Home Visits:** I conduct home visits to provide personalised play sessions. These visits allow me to tailor activities specifically to each child's developmental stage and interests, ensuring they receive the most beneficial and enjoyable experiences.

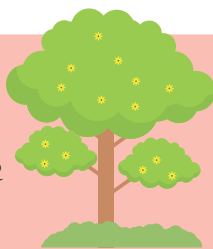
**Parent Support and Advice:** I offer guidance on other services available within our project and the wider community that may benefit parents. Whether it's additional educational resources, health services, or community programs, I strive to ensure that families have access to the support they need.

### Fun Fact About Me

A fun fact about me is that I have a hidden talent for storytelling and often incorporate imaginative tales into my play sessions, bringing a touch of magic and wonder to the children's learning experiences.

I am passionate about fostering a love of learning and play in every child I work with and look forward to continuing to make a positive impact in our community.

## Meet Sarah! - A Passionate Advocate for Play and Development



Hello! My name is Sarah, and I am thrilled to introduce myself as a dedicated play development worker here at Newry SureStart. Since joining the team in 2017, I've been on an incredible journey of supporting families and enhancing children's experiences through the power of play. I have previous experience in working in primary schools and early years settings, I also have a BA honour in English and History.

In my role, I'm fortunate to plan and lead engaging sessions that spark curiosity, creativity, and joy in young children. Each session is thoughtfully crafted to not only nurture children's play skills but also to create a fun, welcoming space for parents to participate. I believe that when parents are actively involved, it enriches their child's learning experience and fosters a stronger connection in our

community.

### A Heart for Play and Community

Play is a cornerstone of childhood development, and my mission is to build spaces where children can freely explore, learn, and connect with others. Through activities that invite imagination and engagement, I hope to inspire young minds and create memories that families will treasure. Working closely with our parent-toddler groups is truly a highlight, as I get to see firsthand the joy and confidence that children gain with each session.

### A Bit About Me

Outside of work, I enjoy spending time with my family and my Godson, Jack, who is always up for an adventure! I'm also an a coffee lover, and exploring new coffee shops is one of my favourite ways to unwind. You might also catch me at the cinema, escaping into different stories on the big screen - it's a hobby that fuels my imagination and keeps me inspired.

### Building a Playful, Supportive Community

You'll often see me at our parent-toddler groups and play programs around the Newry and Warrenpoint Community where SureStart Programmes are delivered. Whether I'm organising an activity or simply joining in, my goal is to create a supportive and joyful space for both children and parents. I look forward to meeting more of you, sharing in the laughter and learning, and building a vibrant, playful community together! Warmly, Sarah.

# The Importance of Good Dental Health in Under 4s: Join Us for Tooth Fairy Morning!



Ensuring good dental health in young children is crucial for their overall well-being and development. At Sure Start, we believe that starting early with proper dental care can set the foundation for a lifetime of healthy smiles.

For children under four, developing good dental habits is essential. Baby teeth, although temporary, play a significant role in helping children chew, speak, and smile confidently. They also hold space for the permanent teeth, guiding them into the correct position. Neglecting dental health at this stage can lead to cavities, pain, and infections, which can affect a child's ability to eat and learn. Children in Northern Ireland have some of the highest rates of tooth decay in UK.

To help make dental care fun and engaging, we are excited to invite you to our **Tooth Fairy Morning!** On Monday 24th March from 10.30am to 12.30 in Altnaveigh House.



This special event is designed to educate both parents and children about the importance of dental hygiene in a playful and interactive way. There will be

storytelling sessions, fun activities, and a chance to meet our local Dentists, who knows the Tooth Fairy herself might drop in.

Danny the Dinosaur will also return to collect all the unwanted dummies at his dummy drop - all children will receive a certificate of achievement, if you would like any tips on how to prepare your child for giving up their dummy in advance of this event please do get in touch with us.

Remember, healthy habits start early, and with your support, we can make dental care a fun and integral part of your child's daily routine.

We look forward to seeing you there!



**Important Notice**

**Developmental Programme  
for 2-3 Year Olds 2025  
2026**

Join Newry SureStart on our first  
**Darkness Into Light Walk**  
Date: 10th May 2025  
Time: 4:15am

**SAVE THE DATE**

## Open Day

Friday 21st  
March 2025

9.30 am-12.30 pm

Altnaveigh House, Downshire Road Newry

Children must be registered with Newry Sure Start and born between July 2nd 2022 and July 1st 2023 to apply.

For more information please visit our web site FAQ on our web site [www.newrysurestart.org](http://www.newrysurestart.org)



**Please contact Newry Sure Start if you:**

- are expecting a baby
- recently had a baby
- Have a child under the age of 4 who isn't already registered with Newry Sure Start
- or have changed any of your personal details such as address, phone number or email vaddress



## Do you know about our Antenatal Services?

Below are just some of the fully funded services available at Newry Sure Start

- **Antenatal Workshops**

Topics including: Skin to Skin: Baby Basis: Infant Feeding: Talking to Your bump: Packing your Hospital Bag & more!

- **Real Birth Programme**

Designed by midwives and available to access at any time, this pre-recorded online antenatal programme helps individuals gain a deeper understanding of the birthing process. Access is free through SureStart!

- **Antenatal Yoga and Pilates Programme**

Gentle movements to help relax your body and mind, to help you connect with your changing body and your unborn baby, while preparing you for birth.

- **Home Visits & 1:1 Support**

1:1 advice on all antenatal, postnatal, and parenting topics from our programmes, through an arranged home visit, or at our main centre.

